

YTK GC-550T 5M Projector Lift

(Close, normal & services setting)



Features

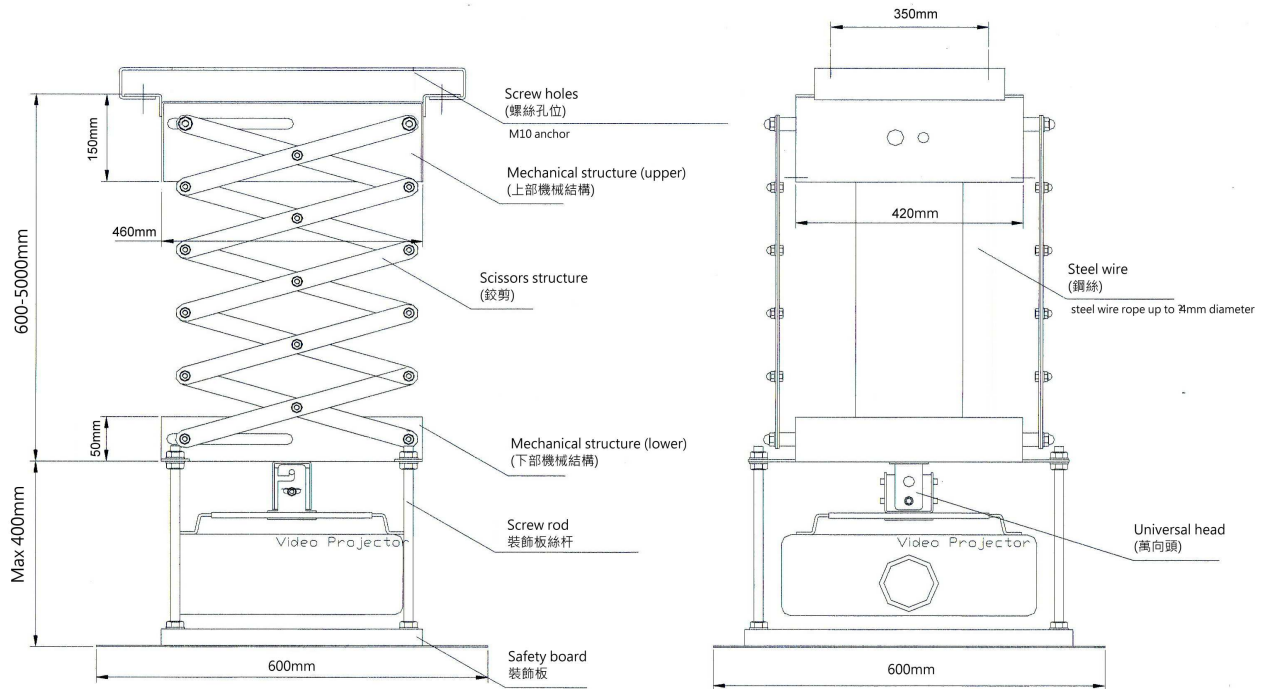
- It can be hidden in the ceiling(close mode), And down to the projection position (normal mode), with down on the ground (services mode)
- 5m projector lift
- Supply RS232/RS485, Including: Manual and wireless remote control
- Function: Up, Down, stop
- Material: Iron of A3, Steel wire
- Steel wire rope up to 4mm diameter
- USA damping motor , Brake Function
- The left / right is 14 groups scissors x 2 , Three section of distance corrections for lift function (close , normal & services setting)
- The adjustable projector angle mount bracket (the left/right 0-30 ° ; Up/Down 0-40 °)
- Automatic setting of Two section: stop
- Color: Phenolic plastics , Surface treatment: Bake of high temperature

Specification

- Motion max distance: 4400mm
- Weight: 40kg

- Load weight: 50kg
- Board size L x W (mm): 600 x 600
- Between true ceiling and false ceiling the height(mm): 900
- Power Supply: 220 V / 50 ~ 60 Hz
- Dimensions: 460(W) x 420 (D) x 600(H) mm.

Drawing



Built-in Wireless control:

- Control mode : RF wireless control
- Function: Up, Down, stop



Suitable use:

Hall, Lecture Theaters, Cinemas

Warranty: 12 Month

CB CE

www.ytk.com.hk